



August 14, 2023

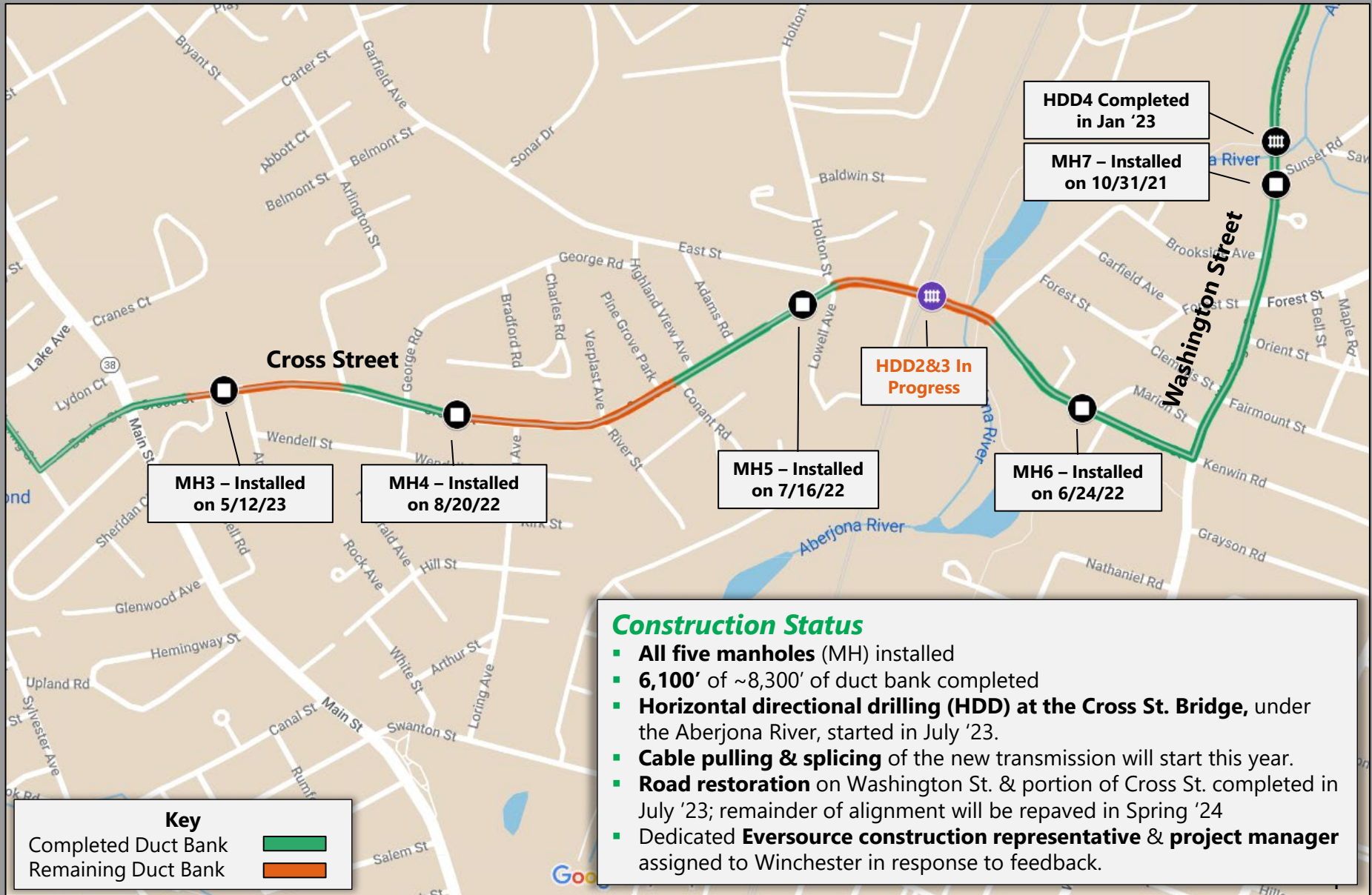


Eversource 345-kV Project Construction Update

presented to the

Winchester Select Board

Winchester Project Map

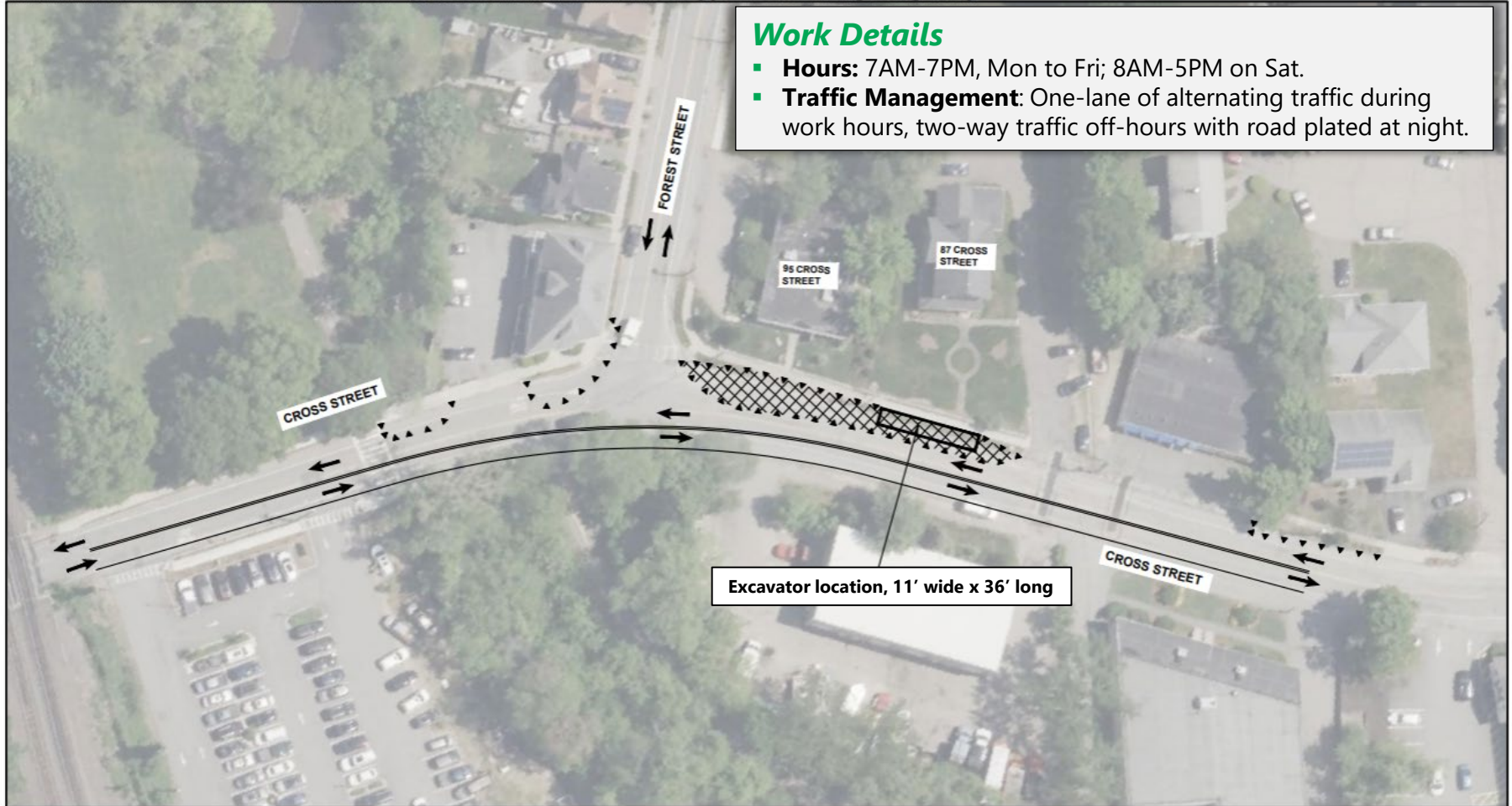


#	Task	Description	Status	Timing
1	Establish laydown areas	Crews laid pipe at Davidson Park, storing materials at Washington St, Soccer Club & Lowell Ave.	✓	July '23
2	Utility relocations	McCourt relocated Town-owned utilities in the area to make room for the new transmission line.	✓	July '23
3	Excavate & install HDD exit & entry pits	HDD entrance & exit pit installed via excavation on either side of the Cross St. Bridge.	✓	July '23
4	Drilling crew arrives	ECI, McCourt drilling subcontractor, mobilized.	✓	July '23
5	Drill 24" conduits & thermal grout	Drill pilot hole, enlarge with multiple drilling bores before installing new duct system.	In progress	Aug. – Sept. '23
6	Remove pit	Entry and exit pits are removed.	Not started	Sept. '23
7	Restore utilities	Relocate & restore water/sewer systems in the area.	Not started	Sept. '23
8	Backfill & demobilize	Roadway backfilled & temporality repaved. Final road restoration in '24.	Not started	Oct. '23

Work activity based on the following schedule

- **Hours:** Monday to Friday, 7 a.m. to 7 p.m. and **Saturday 8 a.m. to 5 p.m.**
 - **During school year:** Monday to Friday, 8:30 a.m. to 4 p.m. and **Saturday 8 a.m. to 5 p.m.**

C:\Users\msutor\Helix Traffic Solutions, LLC\NETrafficDocuments - Documents\files\01-Job1 - Open Jobs\2023\23-029MA - McCourt Construction - Monvale Ave Staging B3 x27\CAD\Cross St HDD\MCC - Cross-forest - NoWork.dwg



Work Details

- **Hours:** 7AM-7PM, Mon to Fri; 8AM-5PM on Sat.
- **Traffic Management:** One-lane of alternating traffic during work hours, two-way traffic off-hours with road plated at night.

Excavator location, 11' wide x 36' long

NORTH



SITE SPECIFIC: TWO-WAY STREET LANE SHIFT ON CROSS STREET AT FOREST STREET
NON-WORKING HOURS CONDITION

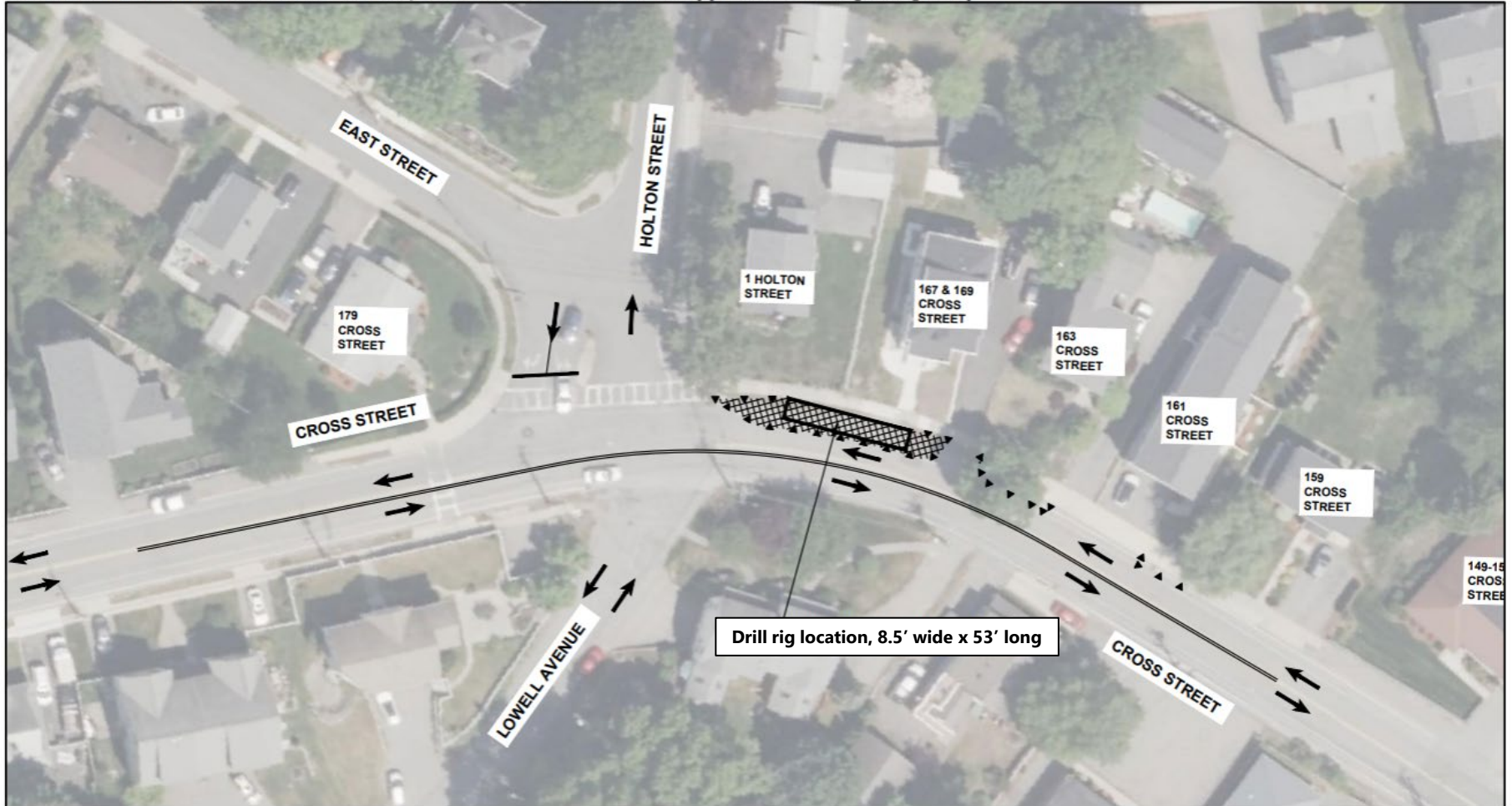
Northeast Traffic Control Services, Inc.

McCourt Construction 6/8/23

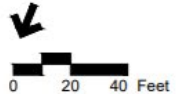
Cross Street, Winchester
Two-Way Street Lane Shift
Temporary Traffic Control Plan

Holton at Cross Traffic Management

C:\Users\msutton\Helix Traffic Solutions, LLC\NETrafficDocuments - Documents\files\01-Job11 - Open Jobs\2023\23-029MA - McCourt Construction - Montvale Ave Staging 193 x27\CAD\Cross St HDD\MCC_Cross-holton_NoWork.dwg



NORTH



SITE SPECIFIC: TWO-WAY STREET LANE SHIFT ON CROSS STREET AT HOLTON STREET
NON-WORKING HOURS CONDITION

Northeast Traffic Control Services, Inc.

McCourt Construction 6/8/23

Cross Street, Winchester

Two-Way Street Lane Shift

Temporary Traffic Control Plan

- **Website:** www.eversource.com/content/woburn-wakefield-project
- **Routine email updates:** join the list, by signing up at <https://bit.ly/ESWWSignUp>, or scan the QR code below
- **Project map:** <https://bit.ly/ESWWmap>
- **Door-to-door outreach,** mailings & flyers
- **Hotline:** 1-833-836-0302
- **Email:** ProjectInfoMa@eversource.com



Eversource 345 kilovolt (kV) Underground Transmission Line Project

Winchester, Mass.
Construction Update
Aug/Sept 2023

Overview



To improve reliability and address the growing need for electricity, Eversource is constructing a new 345-kV underground transmission line that will connect Eversource's Woburn Substation in Woburn and National Grid's Wakefield Junction Substation in Wakefield, Mass. Eversource, in collaboration with Winchester Town officials, is focused on completing the installation of the new line over the coming year and final road restoration in the Spring of 2024.

Work Hours & Schedule

In Winchester, during the school year, crews from McCourt Construction will be working from **8:30 a.m. to 4 p.m., Monday through Friday** and **8:00 a.m. to 5:00 p.m. on Saturdays**. Occasional work may be performed beyond normal hours, or over the weekend, based on approval from local officials. Additional crews on Lake Avenue in Woburn are connecting two sections of recently installed duct bank between Pickering Street and the Woburn Substation.

Work Zones

Cross Street HDD (Winchester): Crews recently completed pipe installation, between Holton Street and Forest Street, using a Horizontal Directional Drill (HDD) method. Over the next few weeks, crews will be connecting two small sections of duct bank from the previously excavated HDD entrance pit near Holton Street and HDD exit pit near Forest Street. Lane restrictions and vehicle detours will be in place around this work site during work hours.

Cross Street (Winchester): Two excavation crews will continue installing duct bank between Cleveland Road and the Woburn City line. A third crew will continue to excavate and install duct bank between River Street and Highland View Avenue. Lane restrictions and vehicle detours will be in place around this work site during work hours.

Lake Avenue (Woburn): Crews will continue working to complete the installation of duct bank between Pickering Street and Arlington Road. Lane restrictions and vehicle detours will be in place around this work site during work hours.

Stay Informed

- **Website:** www.eversource.com/content/woburn-wakefield-project
- **Email updates:** join the list by visiting <https://bit.ly/ESWWSignUp>, or scan the QR code
- **Interactive project map:** <https://bit.ly/ESWWmap>
- **Door-to-door outreach** and **construction update mailings** conducted by Eric Sacchetti
- **Hotline:** 1-800-793-2202
- **Email:** projectinfo@eversource.com

